

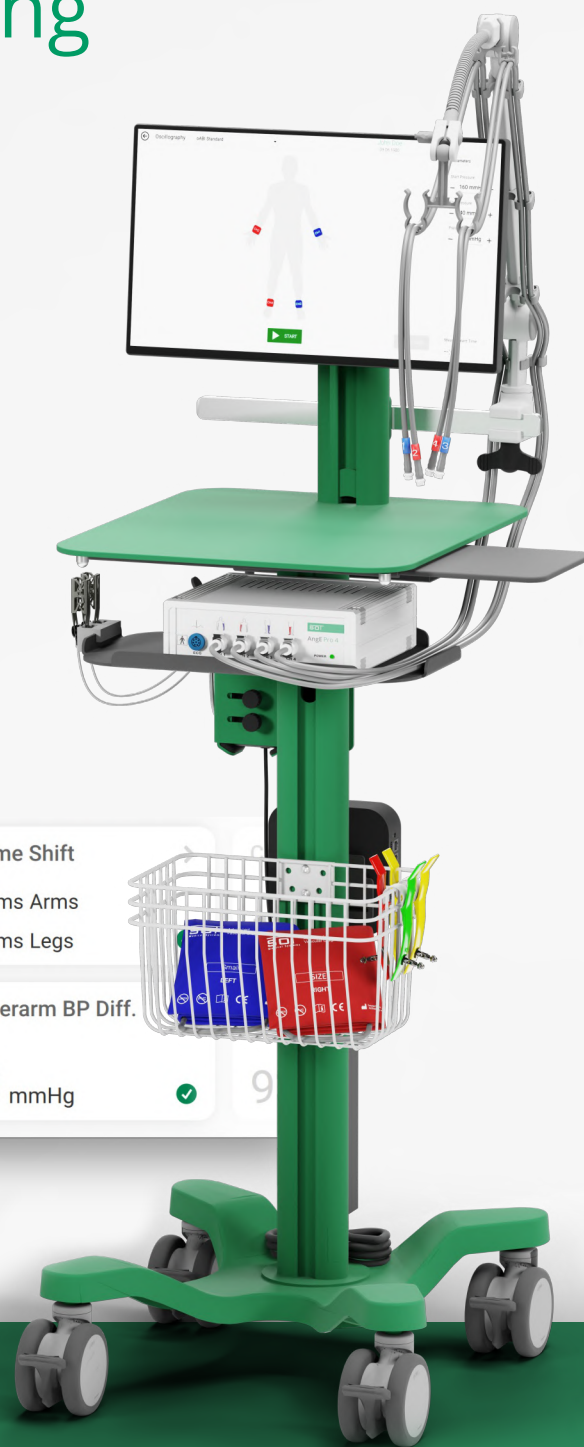


AngE™ ABI+

Vascular Health Screening in 1 Minute

- ✓ Easy to Use and Evaluate
- ✓ Peripheral Arterial and Venous Tests
- ✓ macOS  and Windows  compatible
– store directly to EHR/PACS



Vascular Health Score >

Good

No indication for vascular disorder



Vascular Age >

39 Years ✓

Cardiac Output >

5.3 L/min ✓

Rise Time Ankle >

123 ms Left ✓

145 ms Right ✓

Amplitude Diff. Ankle >

1 % 3.7mmHg L ✓
3.7mmHg R ✓

Time Shift

2 ms Arms

1 ms Legs

Interarm BP Diff.

5 mmHg ✓

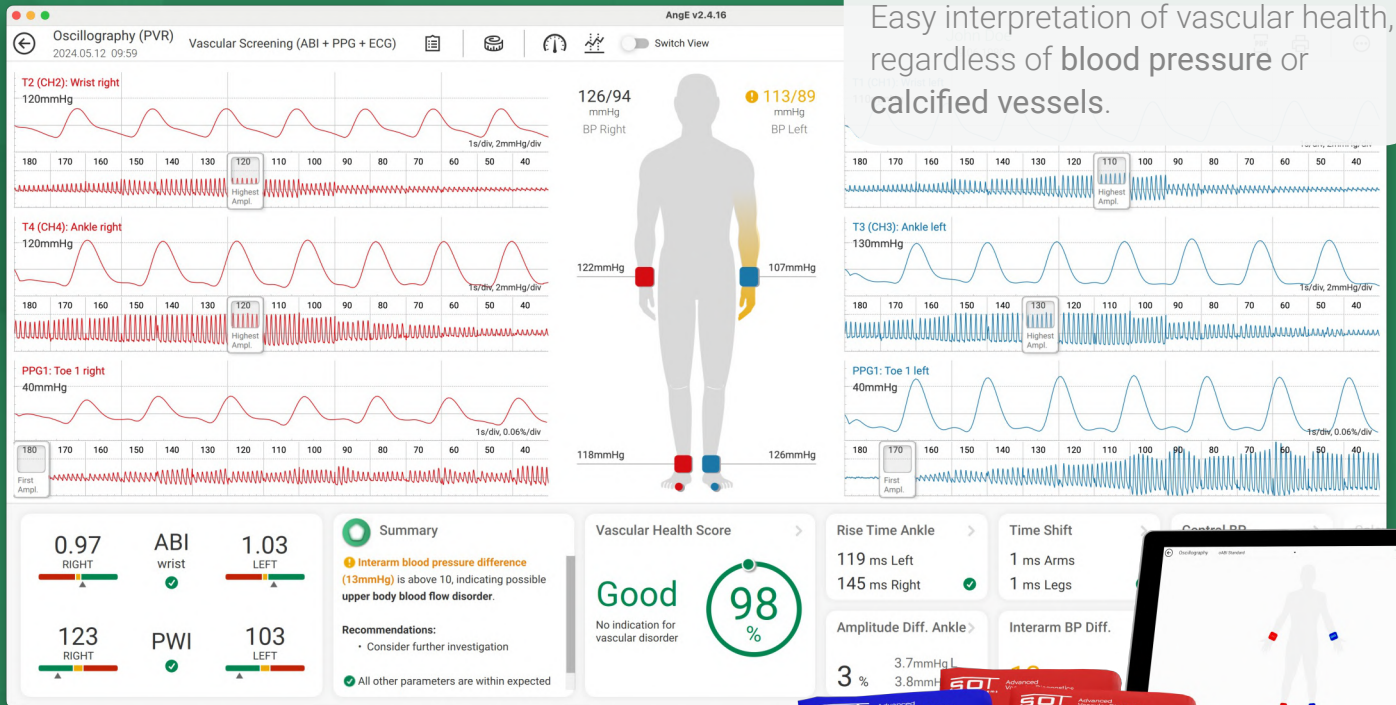
SOT
Medical Systems

Advanced
Vascular Diagnostics
www.sot-medical.com

 Made in Austria

AI-Assisted Vascular Score

Easy interpretation of vascular health, regardless of blood pressure or calcified vessels.



4-Channel simultaneous Pulse Wave Recording on Arms and Ankles plus PPG on Toes.



Get the whole picture...

Related Conditions

- PAD – Peripheral Arterial Disease
- Atherosclerosis & Arterial Stiffness
- Limb Ischemia
- Interarm Blood Pressure (IAD)
- Diabetic Foot Ulcers
- Arrhythmic Heartbeat
- TOS – Thoracic Outlet Syndrome
- Raynaud's Syndrome

Included Parameters

- ABI – Ankle Brachial Index
- PWV – Pulse Wave Velocity
- PWI™ – Pulse Wave Index
- Segmental Pressures
- Finger & Toe Circulation
- Optional: TBI & Systolic Toe Pressure with Skin Temperature
- Optional: HRV – Heart Rate Variability & ECG

...in just

1 Minute



See how it's applied

Access Videos, Report Samples and More



Mobile trolley and touchscreen computer optional.